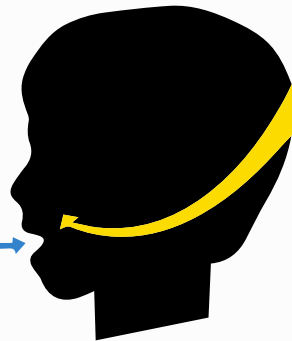
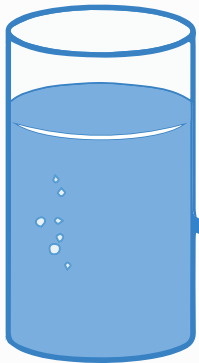


How Fluoride Works

FLUORIDE
IN DRINKING WATER



IS TAKEN IN BY
TEETH
STILL DEVELOPING
BELOW THE GUM



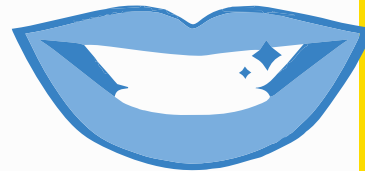
TO HELP CREATE A
STRONG SURFACE

PROTECTING THE
TEETH FROM CAVITIES

IN CHILDREN AND ADULTS

TEETH ARE BATHED

IN FLUORIDE WHEN DRINKING WATER



**GIVING TEETH THE
FLUORIDE THEY NEED
ALL DAY LONG**

ACID PRODUCED BY BACTERIA
IN THE MOUTH CAN CREATE
HOLES ON THE SURFACE
OF THE TEETH



FLUORIDE HELPS PROTECT & REBUILD THIS SURFACE

PREVENTING about 25% of cavities

Build a better foundation for healthy teeth and keep your teeth stronger, longer. Fluoride in water. 75 years and going strong. At a faucet near you.

Visit www.CDC.gov/Fluoridation for more information.

CS317404-A

